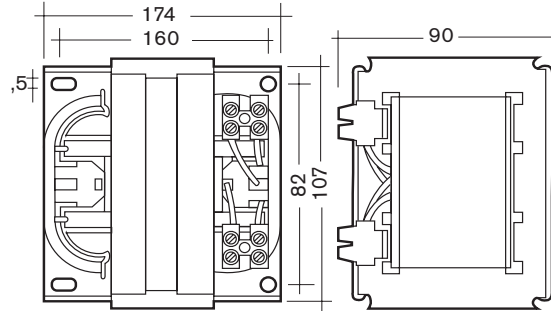


D 1000 FH

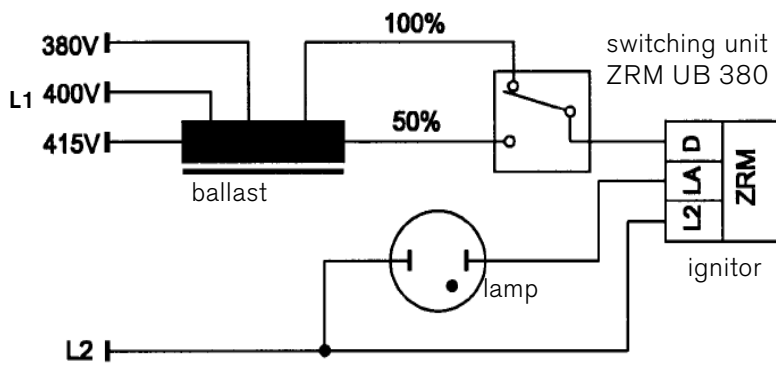
choke for 50% /100 % power steps



dimensions in mm.

screw terminal 1.0-4.0 mm²

circuit diagram



Technical Specifications

Lamp power	1000 W
Voltage	380/400/415 V
Current	4.4 A
Mains frequency	50 Hz
T _w 1)	130 °C
Internal consumption ²⁾	65 W
λ	0.54
ΔT	70 °C
Weight	7.75 kg

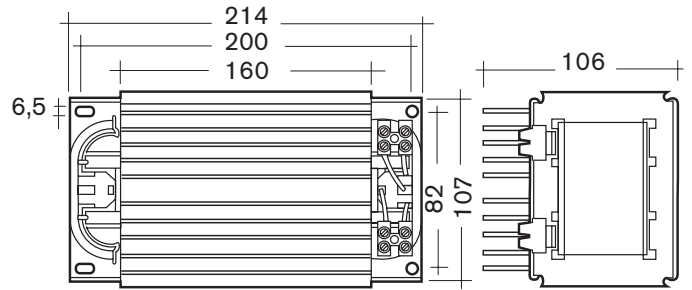
1) maximum coil temperature

2) mean value, measured at copper temperature 25°C

EN 60922/923

D 1500 FH

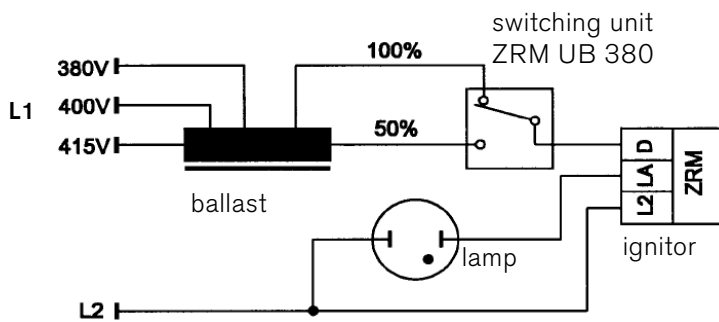
choke for 50 % / 100 % power steps



dimensions in mm.

screw terminal 1.0-6.0 mm²

circuit diagram



Technical Specifications

Lamp power	1500 W
Voltage	380/400/415 V
Current	6.4 A
Mains frequency	50 Hz
T _w 1)	130 °C
Internal consumption 2)	63 W
λ	0.6
ΔT	70 °C
Weight	10.7 kg

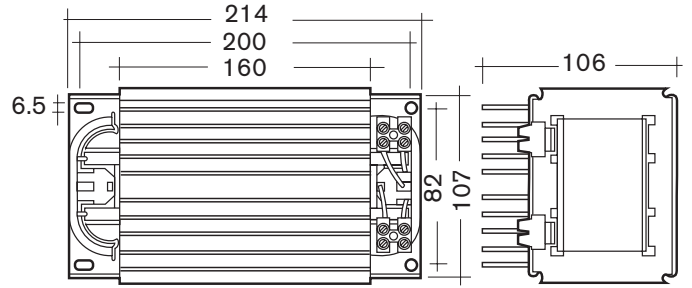
1) maximum coil temperature

2) mean value, measured at copper temperature 25°C

EN 60922/923

D 2000 FH

choke for 50 % / 100 % power steps



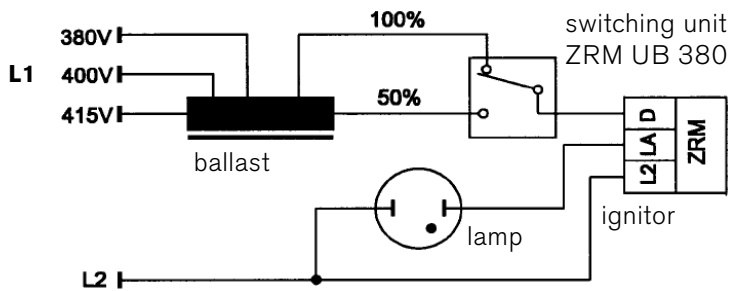
dimensions in mm.

screw terminal 1.0-6.0 mm²

Technical Specifications

Lamp power	2000 W
Voltage	380/400/415 V
Current	8.8 A
Mains frequency	50 Hz
T _w ¹⁾	130 °C
Internal consumption ²⁾	75 W
ΔT	70 °C
λ	0.6
Weight	10.7 kg

circuit diagram



1) maximum coil temperature

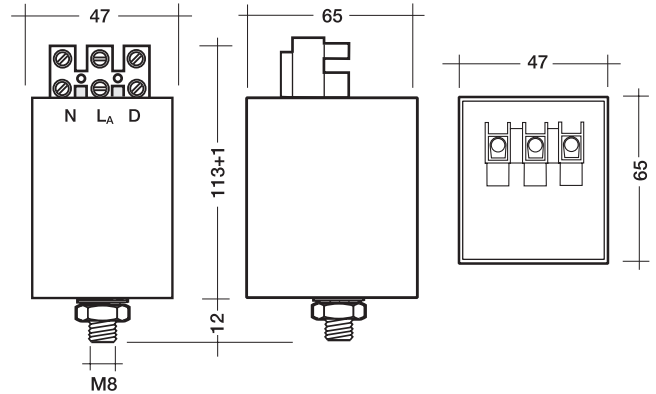
2) mean value, measured at copper temperature 25°C

EN 60922/923

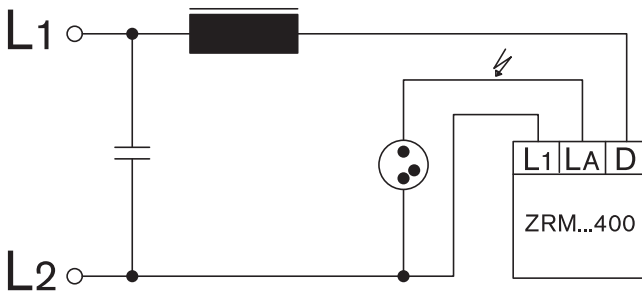
ZRM 20-ES/B 400 ULAG

Superimposed Pulse Ignitor

ULTRALIGHT
UV-TECHNOLOGY



circuit diagramm

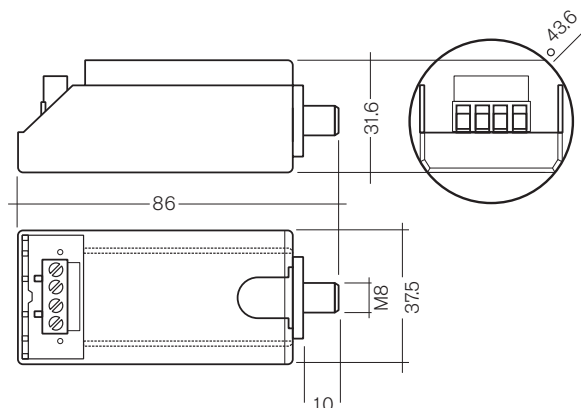


technical specifications

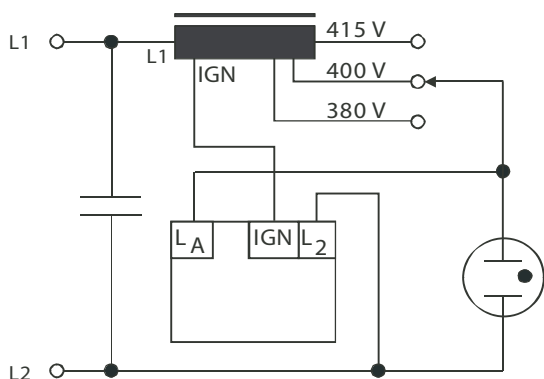
nominal voltage	360 – 490 V
mains frequency	50/60 Hz
ignition voltage	5.0 – 6.5 KV
Max. permissible lamp current I _b	20 A
ignition current	≈120 mA
self-heating at I _B = 20A	≈ 36 K
losses at I _B = 20A	≈ 9.2 W
puls width at 3000 V	≥1.0 μs
number of pulses per mains halfwave	1 – 2
distance between pulses	< 0.3 ms
Phase displacement of ignition pulses	60-90 / 240-270°el
Switch off/on voltage	320-360 V
max. capacitive load	20-100 pF
max. cable length to lamp	1.5 m
max. container temperature t _a	105°C
min. ambient temperature t _a	-30°C
weight	750 g

IZG 400/4000

Digital Pulse Ignitor for UV lamps



circuit diagram



technical specifications

nominal voltage	380 - 440 V
permitted input voltage	342 - 484 V
mains frequency	50/60 Hz
ignition voltage	4100 (± 200) V
lamp power	2000 W
own energy consumption	1.5 W
pulse width at 90 % ignition voltage	> 10 µs
number of pulses per mains half-wave	1
phasing of ignition pulse	72 / 252 °el
switch on voltage	> 342 V
switch off voltage	digital
max. capacitive load	4000 pF
min. cable length to lamp	0.2 m
max. ambient temperature ta	+80 °C
min. ambient temperature ta	- 30 °C
max. container temperature tc	+85 °C
weight	58 g